

Imago

for Flute, Soprano and electronics

Fiona Hill

2019

Imago is based on the historical practice of Forced Adoption in Australia which reached its peak from 1950-1980, and the subsequent apology to the victims of Forced Adoption by the Gillard government on 21st March 2013. The text for the work is drawn from transcripts on the History of Adoption Project by Monash University, the government apology by Prime Minister Julia Gillard and the book 'Coming home to truth' by Judith Hendrikson.

For more information on the History of Adoption Project please visit <http://bit.ly/HistAdoption>

The creation of this work was made possible by the APRA Art Music Fund 2018.
Premiere performance by Lamorna Nightingale and Jane Sheldon at the Tilde~ New Music Festival, Melbourne, 2019.

The patch for the electronic component of this piece was built in Max/MSP by Benjamin Carey.

Imago Score notes

Performance notes


The piece is performed with live electronic manipulation and an electronic backing track, controlled by a footswitch pedal (or operator). There is an accompanying MaxMSP patch which, along with the backing track, is available for download here:

<https://www.dropbox.com/sh/350jmhbs2nsozds/AADxBUZQmJcrkpkQ9JujS9d5a?dl=0>

The backing track is available in either stereo or quadrophonic array. It is also available with the live soprano part recorded so that the piece may be performed with solo flute only. Performers should use a stopwatch to ensure synchronisation with the backing track. The score is written without barlines or time signatures to encourage a sense of freedom in performance. Timings given in the score should be adhered to as closely as possible whilst maintaining a feeling of freedom.


Notation


Live effects change markings

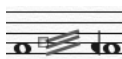
 Large boxed numbers throughout the score indicate when the performer (or person controlling the patch) needs to change from one effects preset to the next. If the presets are being controlled by a footswitch pedal then the performer will initiate the change, otherwise these changes can be done through the patch software. Please see further notes below in the 'equipment required' section on how this preset control works.

Flute

 crescendo dal niente.

 diminuendo al niente..

 Harmonics – overblow the written bottom note to achieve the sound of the upper note.

 Timbral Trills.

 Pitch Bend – bend the pitch using the embouchure.

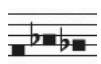
 Pitch Bend – bend the pitch using the embouchure.


 Multiphonic.


Microtones:

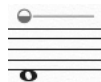
- ‡ Note raised a quarter of a tone (between ♯ and ♯).
- ‡‡ Note raised three quarters of a tone (between ♯ and whole tone above).
- ‡ Note lowered a quarter of a tone (between ♯ and ♭).
- ‡‡ Note lowered three quarters of a tone (between ♯ and whole tone below).





 Tongue Ram - explosive percussive gesture produced by sealing the embouchure hole completely with the lips and strongly propelling the tongue into the embouchure hole. The result is a percussive thud with a pitch that can sound a major 7th to minor 7th lower than the written note.

 Very short repeated note, over-blown to the upper harmonics partials to create multiphonics.


 flz. Flutter Tongue (german Flatterzunge).

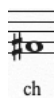
 Airy tone, direct the air across the embouchure hole so that less pitch and more air is heard.


 Totally cover the mouthpiece with the mouth so that only air sounds are heard.


 Inhale – arrowhead points up

Also use consonant sounds ‘ttt’ and ‘ddd’ to create more variety.

 Exhale – arrowhead points down

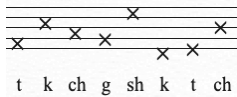
 Ch
ch

 Ss
sssss

 Shh
ssh

Use the consonant sounds to create a variety of airy sounds with very little pitch.

 fftt



Percussive articulations with very little pitch. These sounds need to be quite exaggerated and explosive for them to be audible.

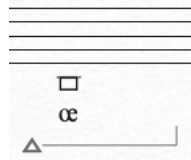
Soprano

Much of the text for the soprano part uses the International Phonetic Alphabet. An IPA chart as well as an IPA chart with examples of the sounds can be found here:

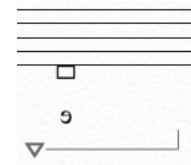
<http://www.internationalphoneticalphabet.org/>



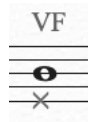
Sing approximate pitch with a breath tone. More breath than pitch should be audible



Breath tone with an inhalation – arrowhead points up



Breath tone with an exhalation – arrowhead points down



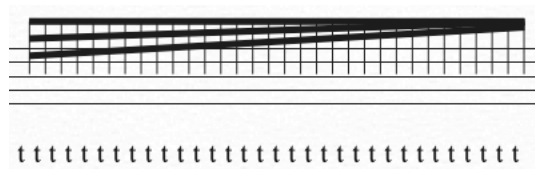
Cross notehead and VF indicate Vocal Fry. Produce a creaking sound with the vocal folds. When written with another pitch both the pitch and vocal fry sound should be heard.



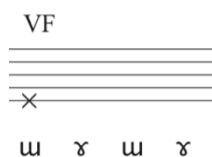
Cross noteheads indicate non pitched sounds. Refer to further instructions in the score, e.g. whispered, shout, glottal stops etc.



Very wide vibrato effect



Consonant t sound with no audible pitch



Make vocal fry sound whilst moving tongue on and off the velar palate



Like he de de de but using middle of tongue to articulate consonants

Cell notation

Cell notation is used extensively throughout in the flute part. The cells should be played in any order. Only cells between two timing points should be chosen, when the next timing point is reached the performer should use the next set of cells (unless otherwise stated in the score).

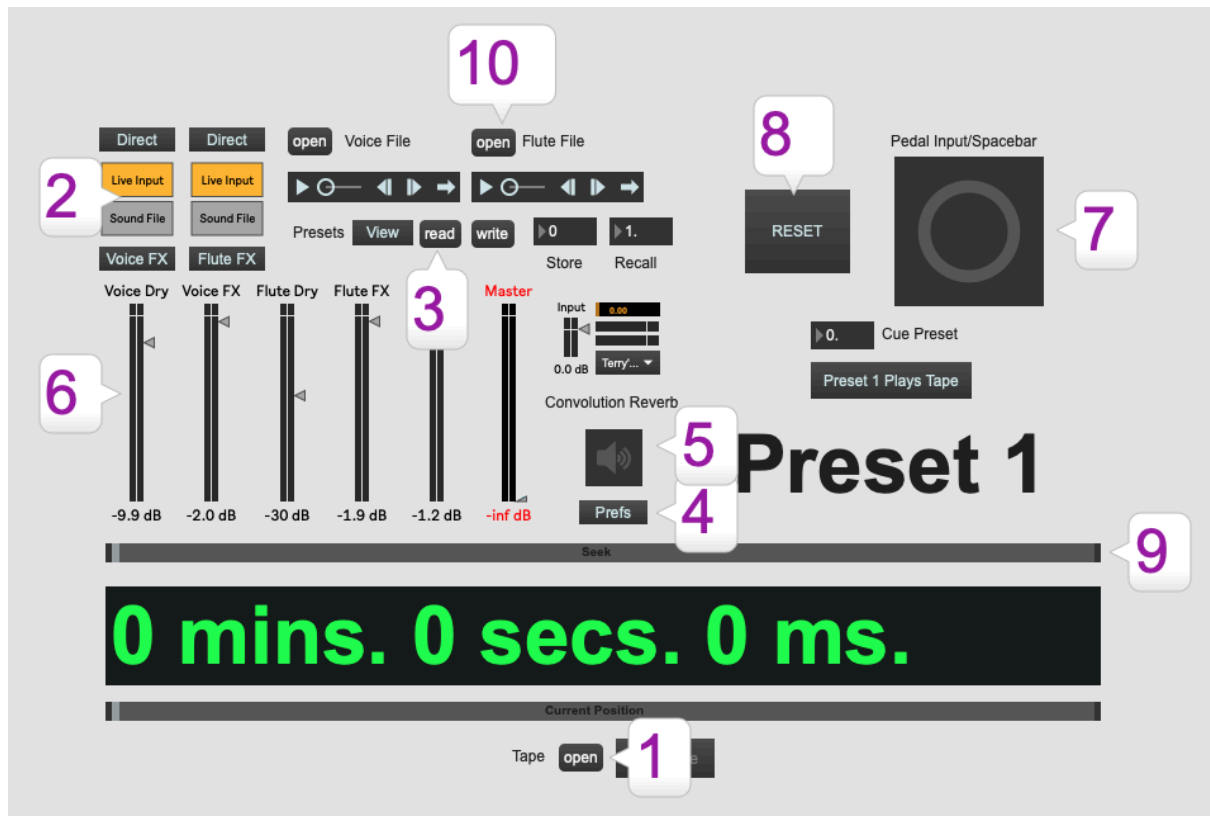
Equipment required

- Each performer should have a microphone close to the instrument. This may be either a headset microphone or other directional microphone that doesn't pick up too much of the reverberant sound.
- Computer running MaxMSP
- Soundcard
- Stereo or quadrophonic speaker array
- Foldback speakers (optional)
- Footswitch pedal (optional)
 - If no footswitch pedal is used, then the piece will need someone to control the changes of live effects in the patch during the performance. Alternatively, the flautist may control the switching between effects by using a footswitch.
 - The patch will accept a USB footswitch that emulates the pressing of the spacebar (ASCII code 32). Messages can also be sent from a sustain MIDI pedal (MIDI CC64) such as the Yamaha FC5. More info: <http://bit.ly/pedalFC5>
 - Sustain pedals have 1/4 inch jacks and don't connect directly to a computer. You can plug a MIDI controller (e.g. music keyboard) into the computer and then plug the footswitch into the sustain jack or use a MIDI adapter such as the one found here: <http://bit.ly/2WICbhu>
 - Alternatively you can use a USB to MIDI footswitch plugged directly into your computer and configured to use MIDI message CC64. An example is the Logidy UMI3 found here: <http://www.logidy.com/?pid=1>

App download

- Max MSP needs to be installed to run the patch. It is not necessary to buy the software to run the patch. Max MSP can be downloaded here: <https://cycling74.com/downloads/>
- Download the latest version of the patch, open the zip file and open the relevant project folder. Download the patch here: <https://www.dropbox.com/sh/350jmhbs2nsozds/AADxBUZQmJcrkpkQ9JujS9d5a?dl=0>

Features and operation of the patch:



1. Click on open to load the backing track “ImagoΣ3. NO FLUTE or SOP_1.wav”
2. Flute and voice can be set to either “Live Input” or “Sound File”. If playing live then set to live input. The patch is set so that the vocal mic is on input 1 and the flute mic is on input 2. Use the sound file function to test thee patch. Click on the “Voice FX” and “Flute FX” buttons to open separate windows which show the individual live effects.
3. Click “read” to load the presets file for all of the live effect presets. This file is included in the download folder and is called: Imago_Final.json. It is possible to view the presets by clicking on the view button. It is also possible to store your own presets using the store and write functions. The preset file makes changes to the live effects only.
4. Click on the “Prefs” button to open the Max audio preferences window. Ensure that your soundcard and inputs are set correctly.
5. Click the speaker button to turn audio on for the patch.
6. The faders control all the levels of the elements of the patch. In general the dry levels should be set fairly low and the FX levels should be set fairly high. Tape and Master levels should be set high. The aim should be to have a balance between the backing track and the live flute and voice.
7. This big button controls scrolling through the FX presets as set out by the large numbers in the score. This can be controlled by clicking on the big button, pressing spacebar on

the computer keyboard or by using the footswitch controller pedal described previously. It is possible to set a specific preset to use independently by clicking on the cue preset number and typing this in.

8. The reset button resets the entire patch.
9. The seek scroll bar allows for moving through the backing track (tape). When play is pressed the counter should jump to the current time position.
10. Click open on the flute or voice to open an audio file for testing the patch.

Summary of effects:

There are 9 presets in the patch for the live effects, here is a basic summary of them:

Preset	Voice				Flute			
	Delay	Comb	ReVerb	Pitch	Delay	Comb	ReVerb	Pitch
1	Preset 1 starts playback							
2	Off	-5.8dB	-16dB	Off	-3.4dB	-19dB	-4.3dB	Off
3	-31dB	Off	-19dB	-15dB	-6dB	-17dB	-30dB	Off
4	-24dB	-2.9dB	-1.2dB	-15dB	-1.3dB	Off	0dB	-33dB
5	-4.6dB	Off	-8.2dB	Off	-7.3dB	Off	0dB	Off
6	-28dB	-2.9dB	-1.2dB	-15dB	-18dB	-17dB	0dB	-33dB
7	-12dB	Off	-20dB	Off	-4.2dB	Off	-31dB	Off
8	-13dB	Off	-36dB	-7.4dB	-13dB	-3.7dB	-30dB	-19dB
9	-3dB	Off	-9.6dB	Off	-3.4dB	-19dB	-4.3dB	Off

Full Score

Imago

Fiona Hill

0' 00"

0' 24"

0' 31"

Freely, with rubato
approx. ♩ = 69

Faintly start cherry song, muffled with hand over mouth
 Gradually getting more intense.... End with backing by 2'11"

Soprano

I gave my love a che-rry that had no stone, I
 How can there be a che-rry that has no stone? How
 A cherr-y when it bloss-oms there is no stone, a

1

2

0' 24"

0' 00"

♩ = 63

Very sparse, sustained and breathy

Flute

pp *pp* *pp*

S

gave my love a chick-en that had no bone, I gave my love a sto-ry that has no end, I
 can there be a chick-en with-out a bone? How can there be a sto-ry that has no end? How
 chick-en when it's pipp-in' there is no bone, the sto-ry of I love you it has no end, a

"I am a happy fulfilled woman"

0' 49"

Gradually less sparse, shorter and less breathy, building to 2'11"

Fl.

Use flutter or vibrato on any pitches

S

gave my love a ba-by with no cry-in' a ba-by when it's sleep-in' there's no cry-
 can there be a ba-by with no cry-in'
 ba-by when it's sleep-in' there's no cry-in'

Fl.

flz.

2' 11" clicking
 2' 17" whoosh "Their children grew up"
 2' 26" **Dry level ↓** Repeat for 10 secs
 2' 36" "The pain never goes away"

S
 in' e o i u
pp *mp*

2' 14" clicking whoosh
 2' 17" "Their children grew up"
 2' 26" breathy
 2' 36" "The pain never goes away"

Fl.
 sssssss ltt
 little pulses and articulations
ppp

Dry level ↑

2' 55" Vocal sounds should border on the involuntary vocal expressions that people make
Subtle expressivity over precision at all times, consequently variations in pitches and vowels are okay

Vocal fry VF Whining VF

S
 α α ə α
mp

3 Dry level ↑

2' 55" Anxious breathing sounds

Fl.
mp

S

œ ɔ œ ɔ œ ɔ

Fl.

3' 41"

Add in any of these pitches to existing breathy sounds

pppp

S

4' 30" Sharp intake of breath molto vib.

mf *f* n n a m

4' 38" "The sexual act"

Fl.

4' 30" flz. *mf* ssssss lût 4' 38" "The sexual act" *f*

S

4' 50" VF VF Muttering under breath illegibly, Choose one or more lines of text shout

m m̃ ɲ "Should've kept your legs closed" slut

"You're the town bike" *f*

"Slut" "Bag of trash"

Fl.

"I was frightened" 4' 54" Play sparsely until 5'21"

mf *f* *p* < *f* >

Tongue rams performed in order but sparsely with dislocated rhythm

S

VF VF

non vib.

mf *mf*

4 ♩ = 60

6' 17" "They slept around"

Fl.

f

S

shout

p *f* *f*

sin - ner

Fl.

f

S

Muttering under breath illegibly,
Choose one or more lines of text.
Some words pop out

mp

"Should have kept your legs closed"
"Any dog can give birth"
"Slept around"
"Deserved what you got"

Fl.

mp

6' 40"

Like air out of a balloon

S

mp

Repeat until 6' 45"

flz.

6' 46"

Descending quarter tone scale

accel.

"Whore"

simile

Fade FX

ff

6' 55"

Waterfall

51 secs

S

5

6' 55"

Waterfall

47 secs

7' 42"

Fl.

ff
pp

7' 46"

"A Nurse came down"

whispered with a natural rhythm

8' 11"

S

nai-ive

vul-ner-a-ble

pow-er-less

pun-ish-ment

vi-o-la-tion

dev-es-ta-tion

p

7' 46"

"A Nurse came down"

Sparse, becoming closer by 8'19"

Fl.

mp

p

f

mp

mp

p

flz.

S **8' 19"** "My daughter arrived" VF VF Muttering under breath illegibly,
Choose one or more lines of text

m m n n

mf

"What a whore"
"Forget the baby"
"It's for the best"
"It's not your baby"

Fl. **6** **8' 19"** "My daughter arrived" Increase intensity

mp *f* *mf*

ff *pp* *tt*

mf *flz.*

S

η ζ η ζ

Fl.

pp *f* *p* *flz.* *sfz*

S shout groan VF dreamily sharp

slut > α > m u a >

p *ff* *f* >

Fl.

ff *mp* *f* *mf*

Like air out of a balloon

S

Whining

f *mf* *mp* *sfz*

Fl.

flz. molto vib. *mf*

S

9' 10"

ff *p* *f*

Fl.

9' 10"

p *f* *ff*

9' 18" "I hid in my parents house"

S

VF VF

u y u y u y a m

9' 18" "I hid in my parents house"

Gradually becoming more sparse until 9'58"

7

Fl.

cch *mf* *mp*

S VF VF VF

× × ×

ᵿ ᵿ ᵿ

ᵿ H

Fl. *mp* *mf* *f*

t k ch g sh k t ch
Perform some, or all, sparsely in any order with dislocated rhythm
mf

9' 58"

S VF

whispered with a natural rhythm

8 secs

□ ×

ᶑ H

ba - by first born wound ne-ver heal

Fl. flz. *f* ssh

9' 58" Spoken voice out
15 secs

Dry level ↑

Flute and voice should roughly align until 13' 39"

10' 13" *Freely, with rubato*

10' 28"

S

a hʌ dʌ dʌ dʌ

mp *f*

8 Dry level ↑

♩ = 72 *In a loose triple metre with rubato*

Flute and voice should roughly align until 13' 39"

10' 13"

10' 28"

Fl. *p* *p*

10' 45"

S *VF* *mp* *f* operatic vib. Muttering under breath illegibly.
Choose one or more lines of text

i e a e i o *œ* *ŋ*

"Baby needs a family"
"What can you give the baby?"
"You're so selfish"
"Welfare will listen to me"

Fl. *flz.* *mp* *ff* *tt*

10' 45"

10' 57"

S Whining *molto vib.*

ŋ n n n n

10' 57"

♩ = 100

Fl.

whispered

S

slut whore sin - ner ssssss - lut

11' 21"

Fl. 5 5

VF

S
whore sin-ner

Fl. *mf* flz.

11' 40" *accel.* humming operatic

S m a f

11' 40" ♩ = 124

Fl. *mp*

♩ = 94 11' 56" molto vib.

S a mp f

♩ = 94 11' 56"

Fl. t t t t t t t t ff tt p

12' 12"

S

Fl.

a ff

ff

12' 12"

S

Fl.

t 9

S

Fl.

VF VF

8 o

rit.

mp *mp*

12' 38"

12' 38"

Muttering under breath illegibly,
Choose one or more lines of text

13' 01"

sssssss - lut
p \curvearrowright *f*

"When you get married"
"You have nothing"
"Christian couples"
"Make a new life"

12' 55"

$\bullet = 72$

p \curvearrowright *pp*

VF

VF

mf

bend pitch dramatically

mf \curvearrowright *p*

13' 25" "I gave my love a cherry"

VF

13' 35"

u

u

13' 25" "I gave my love a cherry"

slide

3

13' 35"

pp

14

Imago

Dry level ↑

13' 37" "No collection of words alone"

14' 17"

with hit

Sharp intake of breath

38 secs

VF

VF

VF

S

Musical staff for Soprano (S) with dynamics *mf*, *f*, *m*, *mf*. Includes performance instructions: "Sharp intake of breath" and "with hit".

9

Dry level ↑

13' 41"

"No collection of words alone"

30 secs

14' 17"

Sparsely

14' 08"

Fl.

Musical staff for Flute (Fl.) with dynamics *pp*. Includes performance instructions: "Sparsely" and "ssh".

14' 42"

VF

VF

S

Musical staff for Soprano (S) with dynamics *mp*. Includes performance instructions: "Get more sparse until 15'10\"

14' 42"

Get more sparse until 15'10"

Fl.

Musical staff for Flute (Fl.) with a box containing the instruction "vary rhythms on repetitions" and a series of rhythmic ticks.

Musical staff for Flute (Fl.) with dynamics *ppp* and performance instructions: "flz." and "<>".

14' 56"

"The wildflowers grew"

15' 05"

Whining

VF

S

Musical staff for Soprano (S) with dynamics 9, α. Includes performance instructions: "Whining" and "i-mā-go".

14' 56"

"The wildflowers grew"

Fl.

Musical staff for Flute (Fl.) with dynamics *ppp* and performance instructions: "<>".

Tape ↓

15' 10"

15' 22" "The butterfly lady"

S

i - mā - go i - mā - go i

mp

15' 10"

15' 22" "The butterfly lady"

Fl.

mp poco a poco decresc.

Fade Master

15' 55"

S

ma i ma go niente

15' 25"

15' 55"

Fl.

niente